

Ethernet Netzwerk

- 8x dry contact ports
- 8x potentialfreie Kontakte

RS232



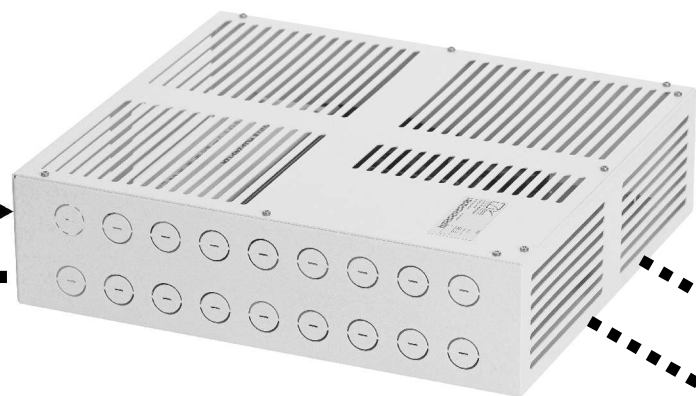
Internal clock and calendar with sunrise/sunset triggering
 Interne Uhr und Kalender mit astronomischer Funktion

Important:

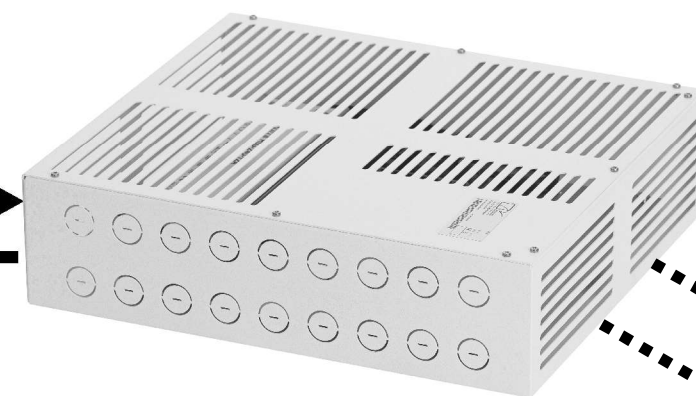
- If more than 32 units are needed, the network can be expanded by using an active DMX splitter/repeater.
- The cable run for a single universe is limited to 300 meters (approximately 1000 ft).
- Cat5 or higher UTP cable may be used inside metal conduit. Use Cat5 or higher STP when installed in raceways
- DMX should be terminated at the end of the line with a 120Ohm resistor between the data + and data - connections.
- Please refer to the USITT DMX-512 standard for further instructions on wiring DMX.
- Please read and understand the user manuals of the fixtures and/or power supplies for further information

DMX universe #1

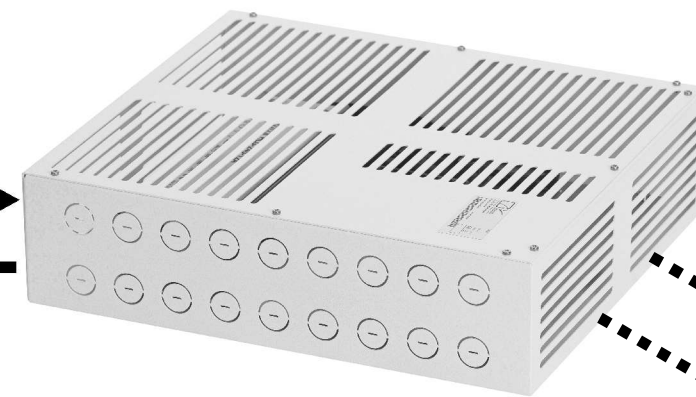
DMX universe #2



to the fixtures
zu den Leuchten



to the fixtures
zu den Leuchten



to the fixtures
zu den Leuchten

up to 32 power supplies (unit)
bis zu 32 Netzteile (Einheit)

up to 32 power supplies (unit)
bis zu 32 Netzteile (Einheit)



Lindberghstr. 15, 86343 Königsbrunn, Germany
 Tel: +49 8231 95787 0 / Fax +49 8231 95787 29
 www.biontechnologies.com

Project:	Wiring cambium xl
Location:	
Fixture Type:	cambium xl + low voltage fixtures
Scale	-
Date/Revision/by	20161017/01/BI